



Welcome to
**Western House
Academy**

Nursery
25-26





Our Vision

By embedding our values-based, high expectation approach to learning and behaviour, we believe in developing the whole-child. What do they need today? What do they need tomorrow?

We strive to give children the knowledge and skills to achieve their full potential and be successful lifelong learners who value their emotional health and wellbeing. WHA is a place where no time is wasted and where 'every opportunity shapes a life'.





Our Values

WHA values are at the core of everything we do. They underpin our teaching and learning, and provide an environment which prepares our pupils as confident, happy citizens.

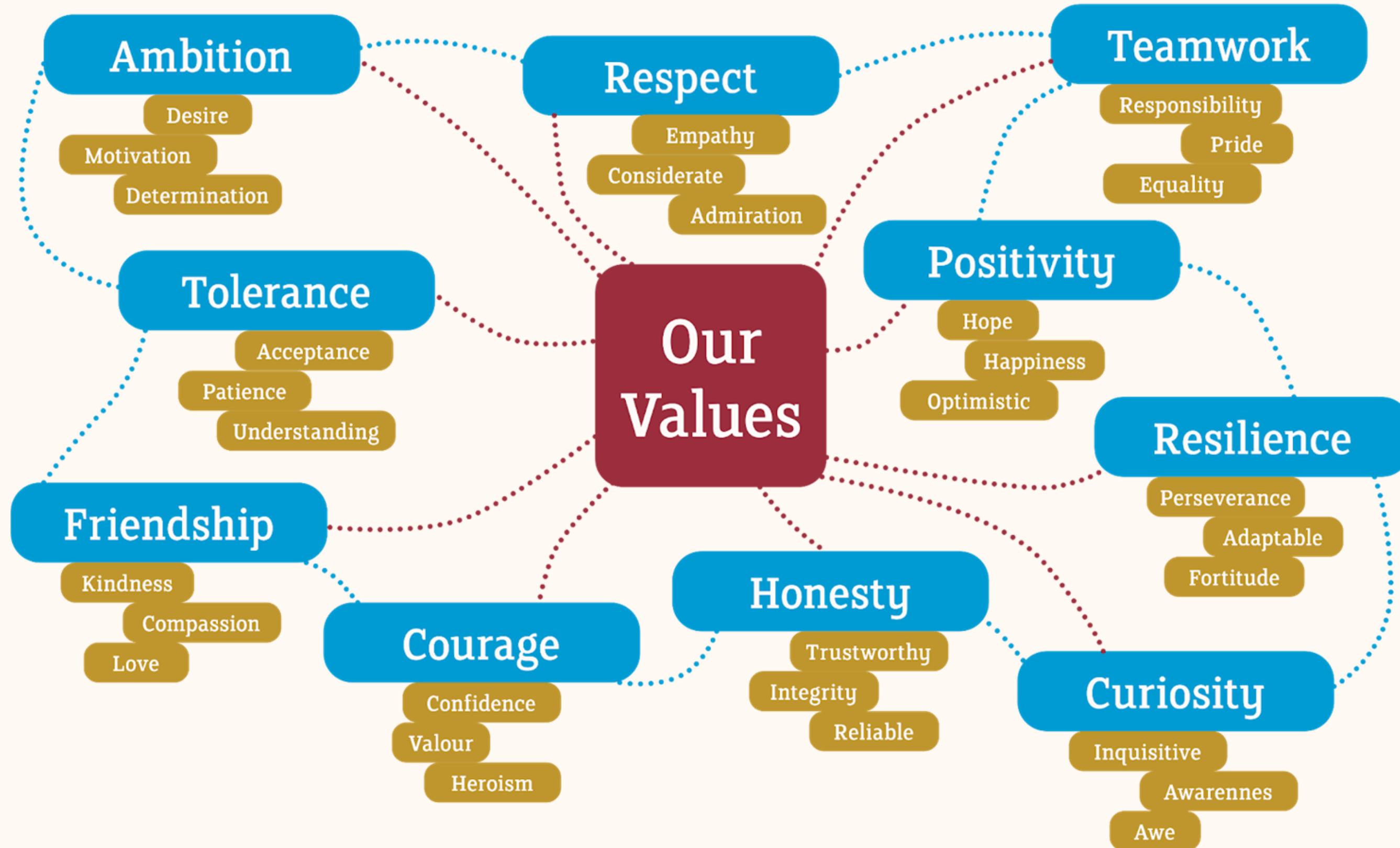
At WHA we believe values are stronger than rules. We see values as a child's moral compass for life; a life skill they can use anywhere.

We promote 10 core values: respect, teamwork, ambition, courage, resilience, honesty, curiosity, friendship, positivity and tolerance. Every month under each core value, we explore further values giving the children a deeper understanding.





Our Values





Introductions: SLT



Mrs Snowden
Principal



Mrs Kearney
Deputy Principal



Mr Overton
Director of
Early Years



Mrs Parmley
Vice Principal



Miss Poynter
Vice Principal



Mrs Costelloe
Vice Principal
Inclusion and
Safeguarding



Our Safeguarding Team

We are here to help

If you are worried about anything, at home or in school, or have any safeguarding concerns please speak to a member of the safeguarding team.

DSL



Mrs Costelloe
Vice Principal
Inclusion
and Safeguarding



Mrs Snowden
Principal



Mrs Kearney
Deputy Principal



Mrs Parmley
Vice Principal



Miss Poynter
Vice Principal



Mr Overton
Director of
Early Years

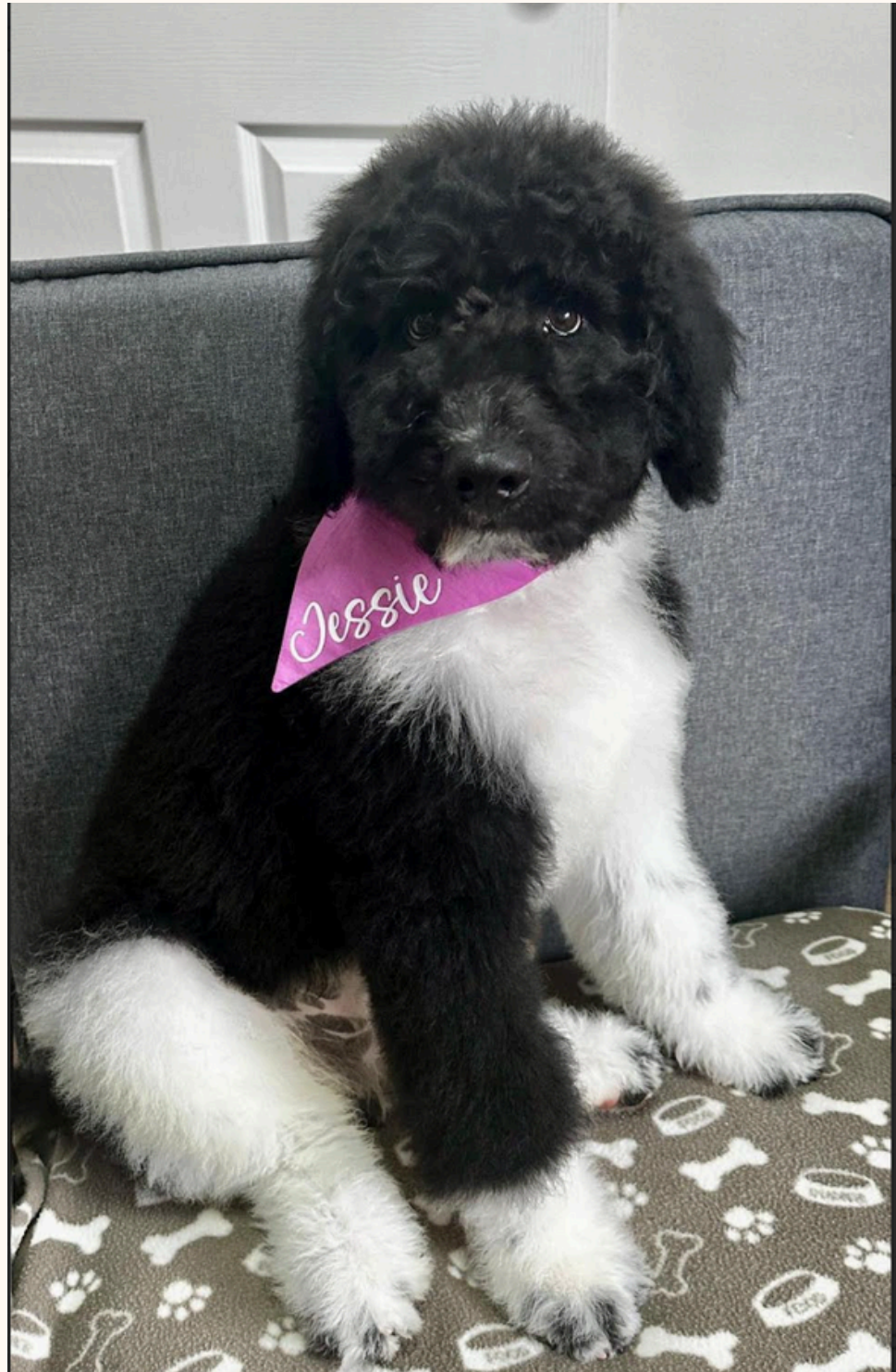


Miss Gregory
Child and Family
Support Officer

Deputy DSL Team



Meet Jessie



- Jessie is a cross between a St Bernard and a Poodle and lives with Mrs Snowden and her family
- Very calm temperament and hypoallergenic
- Jessie is currently in training to be our school therapy dog and her training will take up to 12-18 months. Her three handlers and Jessie will undergo the training with PAWs Therapy Dog Training Programme
- She will always be on a lead around the school and the children will know not to approach her when she is on her lead or wearing her training vest
- No child will work directly with her without permission from parents



Introductions: EYFS Team



Mrs Chinnery
Class Teacher



Mrs Crabbe
EYP



Miss Brench
EYP



Positive Behaviour

- Hot Chocolate Fridays
- Dojo points
- Stickers
- Communication with parents



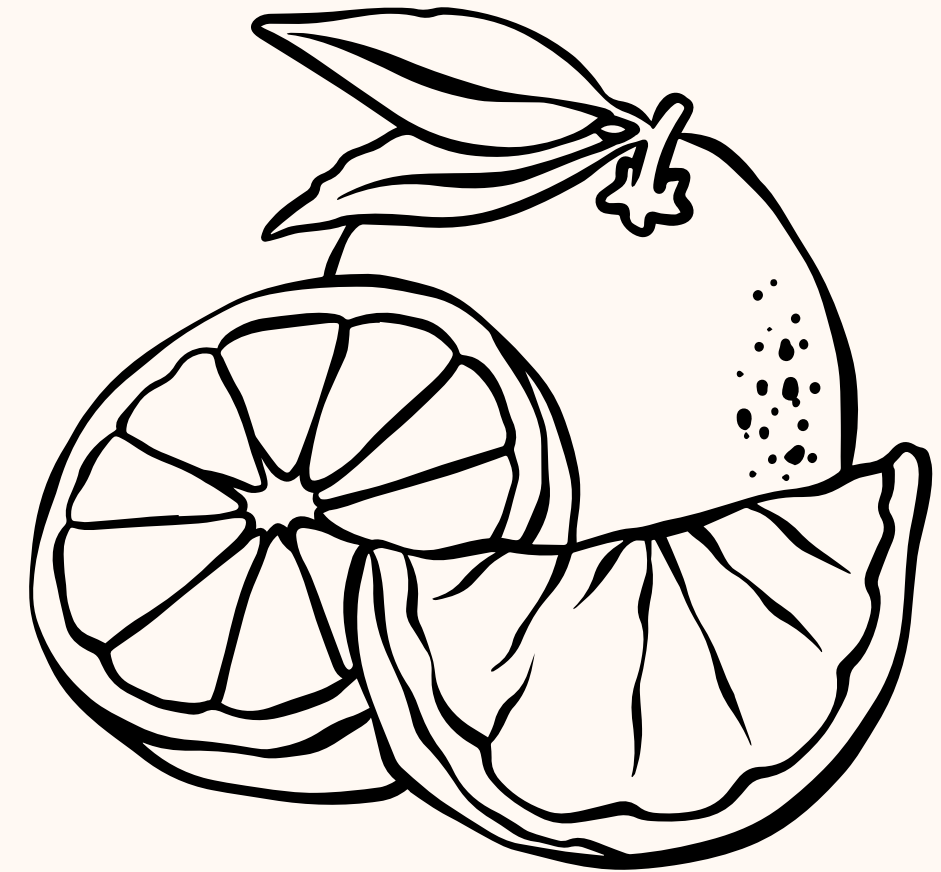
ClassDojo





Fruit and Milk

- Every child is entitled to one piece of fruit and milk each day.
- They will be encouraged to join the snack table when available.
- Please provide a named water bottle for your child every day. This will need to be water only and available throughout the session to help themselves.





Lunches

- The 30 Hours children only will need a packed lunch from home every day.
- We are committed to encouraging healthy lunches for all children, as a result certain foods are not permitted in children's packed lunches.
- These items include; sweets, fizzy drinks, chocolate bars, crisps.
- We are not allowed to accept hot food.





Zones of Regulation

ZONES OF REGULATION

Choose your **zone**. How are you feeling?

Blue	Green	Yellow	Red
			
Sad Sick Tired Bored Moving slowly	Happy Calm Good to go Focused Ready to learn	Frustrated Worried Silly Anxious I need some help	Mad Angry Yelling / Hitting Out of control I need time and space



EYFS Curriculum

3 Prime Areas:

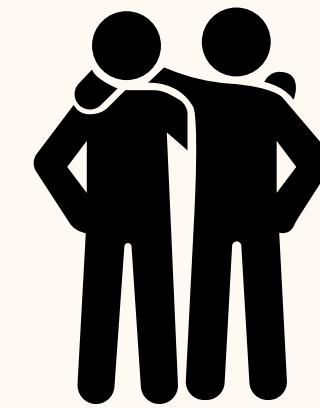
Communication and Language:

- Listening, attention and understanding
- Speaking



Personal, Social and Emotional Development

- Building relationships
- Managing self
- Self regulation



Physical development

- Gross motor skills
- Fine motor skills





EYFS Curriculum

4 Specific Areas



Literacy

- Comprehension
- Word reading
- Writing



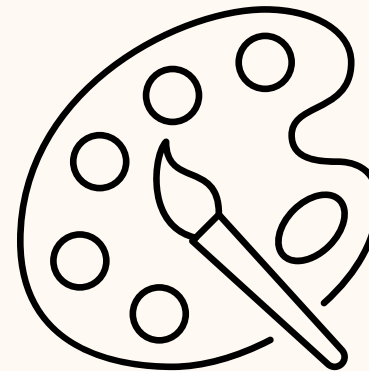
Mathematics

- Number
- Numerical patterns



Understanding of the world

- Past and present
- People, culture and communities
- The natural world



Expressive arts and design

- Creating with materials
- Being imaginative



Our Curriculum



At WHA values are stronger than rules and we are proud of our Enhanced Values Based Education Award. We see values as a child's moral compass for life; a life skill they can use anywhere.

We promote 10 core values:

- Respect
- Friendship
- Honesty
- Teamwork
- Courage
- Curiosity
- Ambition
- Resilience
- Tolerance
- Positivity

Each core value will have linked values that the children will also explore.



We believe progress is knowing and remembering knowledge and being able to use it in different contexts.

Therefore, we build on knowledge right from the Early Years through to Year 6.

Whole school concepts span year groups so that they show how knowledge and understanding extends within a concept.

We also use a hybrid learning environment to build the digital literacy our children will need in future life.



We define equality as being about fairness and ensuring that we give all our children the best possible chance to succeed in life, whatever their background or identity.

Our school promotes equality of opportunity and we value and celebrate the diversity of all children and families. Our curriculum is representative, inclusive, diverse and anti-racist.

We include all elements of the acronym 'GRADES' in our learning to provide an inclusive curriculum to our pupils.

- G = Gender
- R = Religion
- A = Age
- D = Disability
- E = Ethnicity
- S = Sexuality (KS2)



Experiential learning is woven throughout a child's learning journey at WHA. It is carefully designed to bring children into contact with events and places they might not ordinarily encounter, providing crucial context and meaning - we do not need to go far, much of this is on our doorstep.

Beyond the classroom there is a 'hidden curriculum' where pupils are expected to assume a level of responsibility for maintaining societal values in their community, through pupil roles that contribute to the running of the school and in their everyday behaviours.

This is where they have the space to grow confidence, resilience and moral and physical courage.



Learning through play

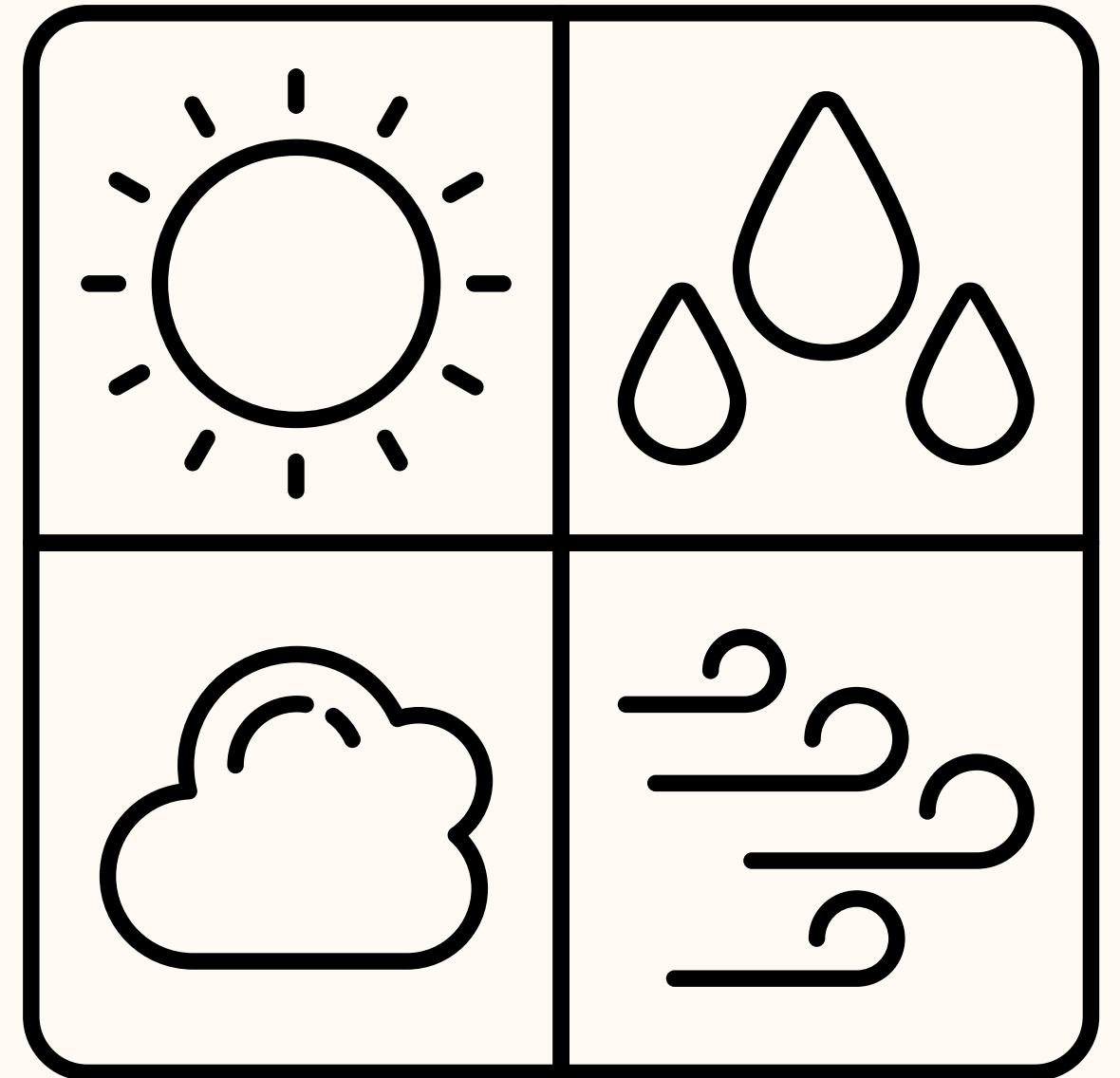
Play facilitates natural curiosity, enabling children to make connections, understand what is seen, heard, and experienced in their world.





Weather

- Unpredictable
- Continuous Provision
- Weather is not a factor, great learning opportunities
- Named raincoats
- Named wellies
- Named hats, scarves and gloves
- Sun cream (before school)
- Names hats and sunglasses

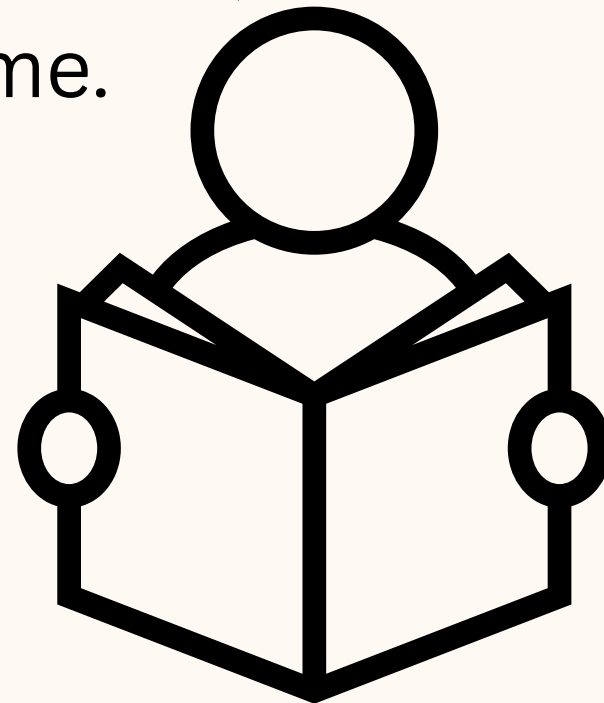




Phonics/Early Reading

- We follow the ELS (Essential Letters and Sounds) programme.
- Children have daily lessons and activities
- Spending 10 minutes every day reading with your child will hugely support them on their journey to becoming an independent reader.

- In the autumn term we will be focusing on Phase 1. This includes, recognising environmental sounds (animals, vehicles), instrumental sounds (being able to repeat back rhythms), alliteration and rhyme.

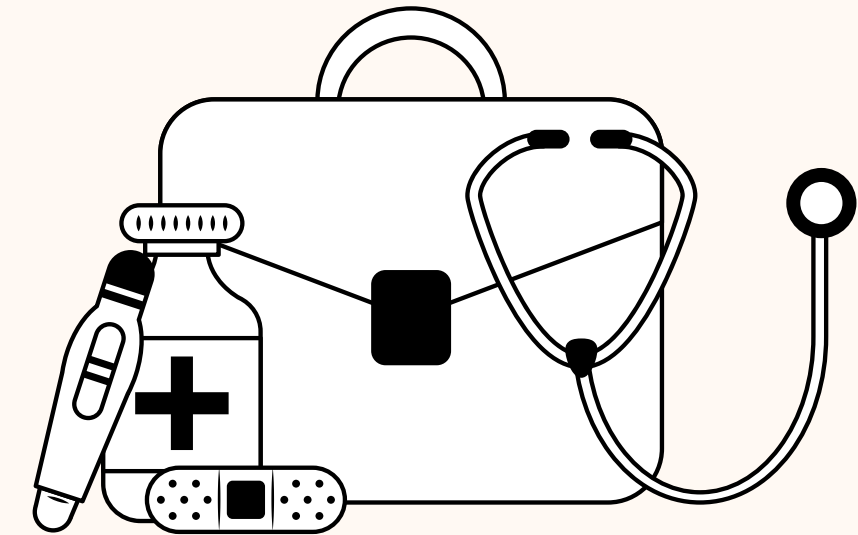




Important information

Medical Needs

- Please share
- Medicine taken in school to be prescribed by a doctor
- Child's name must be written on the medicine
- Arrange a meeting with our Welfare Officer



Allergies and Dietary Requirements

- Please share information with us
- No nut school

Birthday's

- No sweets, chocolate or food to share
- Shared reading book
- Birthday sash and hat

